



jordan fishwick

MANCHESTER
Northcote Avenue



Northcote Avenue, Manchester, M22 9AJ

£370,000



The Property

A spacious 4-bedroom double fronted detached family residence located on a popular residential development in the heart of Wythenshawe. Close to all amenities such as local shops, metrolink station and bus terminal with Manchester Airport & Wythenshawe hospital only a short distance away. The property comprises:- Entrance hallway with ample under stair storage, leading to fitted kitchen with range of units and built in appliances, dining room with door opening to the large rear garden, separate lounge expanding over 14ft, a downstairs W/C / utility room. To the first floor, master bedroom with en-suite shower room, a 3 further good sized bedrooms and family bathroom with fitted white suite. Externally, a driveway providing off road parking, integral garage for storage/parking, lawned front garden whilst to the rear is an extensive, enclosed lawned garden. No onward chain.

Directions

M22 9AJ



- 4-bedroom detached property
- Close to transport links
- Ample parking
- Great location in the heart of Wythenshawe
- Two reception rooms
- Downstairs WC / Utility
- Garage
- Popular residential development
- No onward chain

Postcode - M22 9AJ

EPC Rating -

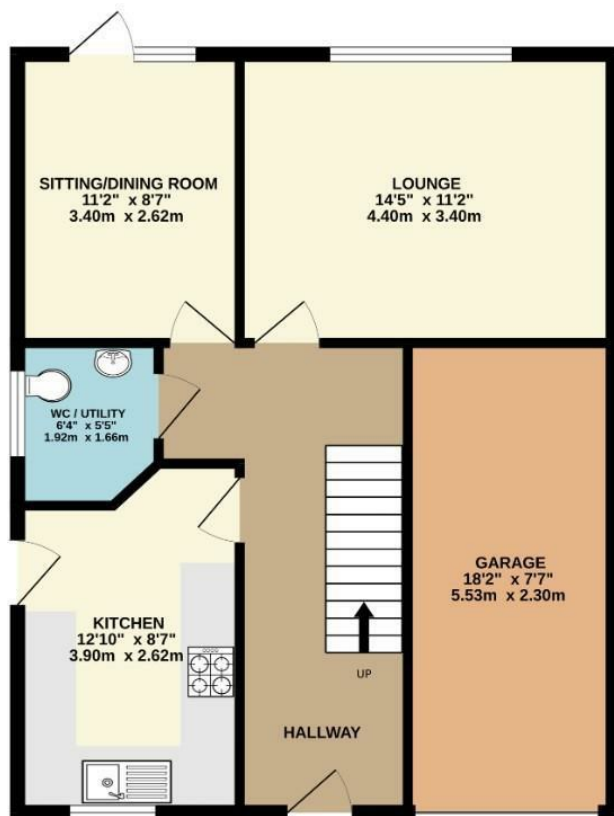
Floor Area - 1278.00 sq ft

Local Authority - Manchester City Council

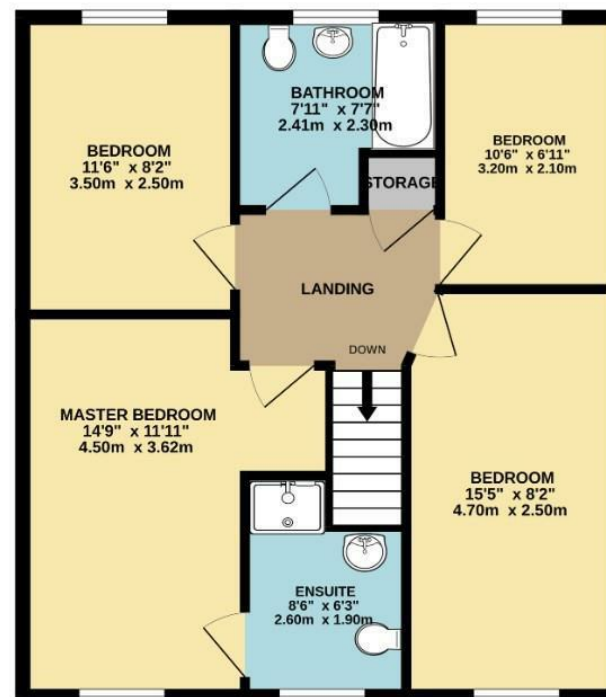
Council Tax - D



GROUND FLOOR
674 sq.ft. (62.6 sq.m.) approx.



1ST FLOOR
604 sq.ft. (56.1 sq.m.) approx.



TOTAL FLOOR AREA : 1278 sq.ft. (118.7 sq.m.) approx.
Measurements are approximate. Not to scale. Illustrative purposes only
Made with Metropix ©2026



These particulars are believed to be accurate but they are not guaranteed and do not form a contract. Neither Jordan Fishwick nor the vendor or lessor accept any responsibility in respect of these particulars, which are not intended to be statements or representations of fact and any intending purchaser or lessee must satisfy himself by inspection or otherwise as to the correctness of each of the statements contained in these particulars. Any floorplans on this brochure are for illustrative purposes only and are not necessarily to scale.

Offices also at: Wilmslow, Macclesfield, Hale, Sale, Chorlton, Glossop, Manchester & Salford

757-759 Wilmslow Road, Didsbury Village, Manchester

0161 445 4480

didsbury@jordanfishwick.co.uk
www.jordanfishwick.co.uk